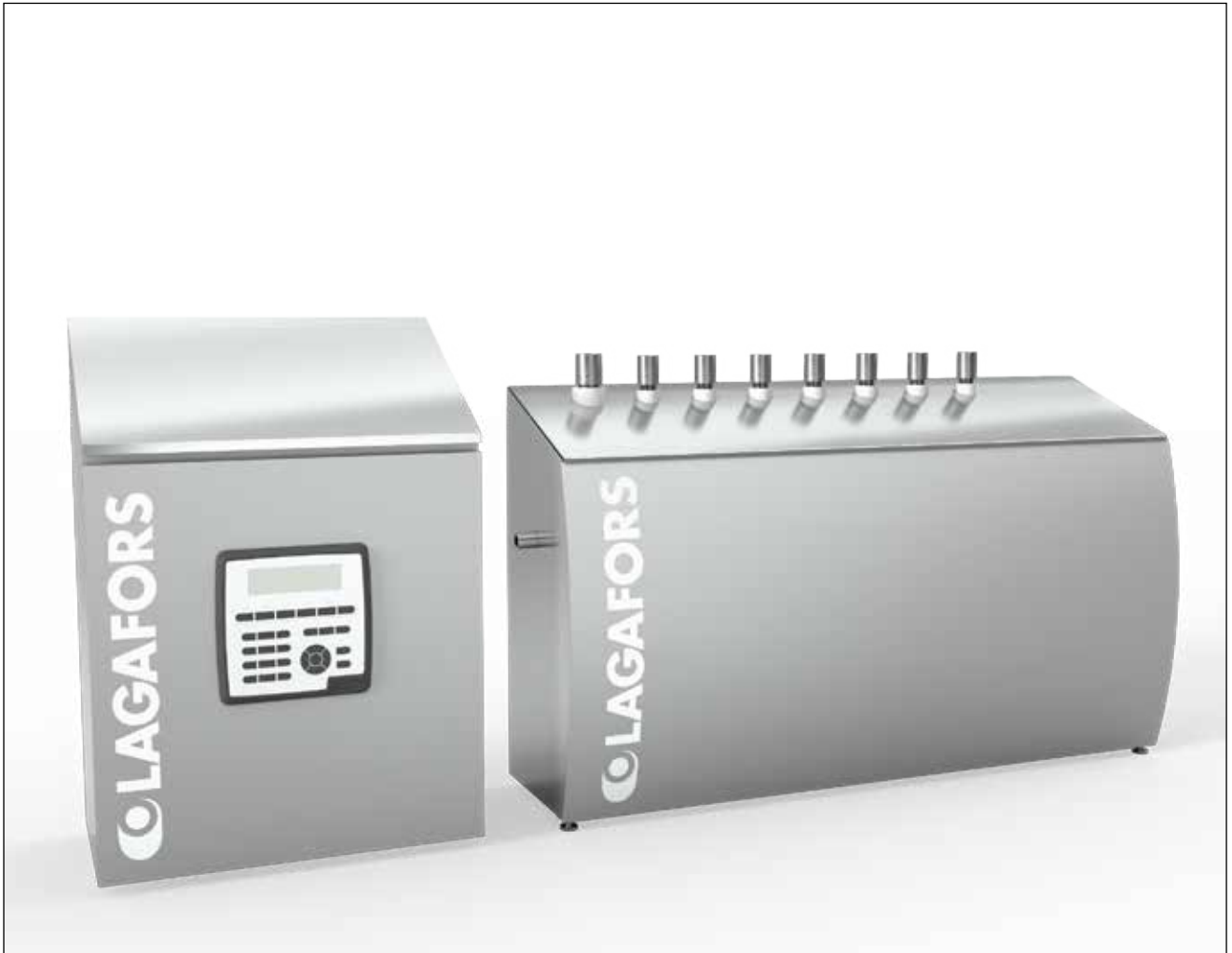


# AUTOMATIC CLEANING SYSTEM - ACS II



The Lagafors® Automatic Cleaning System, ACS II, consists of a controller unit and valve units for water, chemical and disinfectant solutions. The system is designed for automatic cleaning of all types of conveyor belts, elevator belts etc. The design is based on Lagafors's well-known VMS II satellite station series, and from a hygienic point of view the unit has been adapted to the food-processing industry. The ACS II system is ready to be connected to any Lagafors pressurized water unit as well as the VCC II dosaging central for chemical and disinfectant solutions. The unit is user-friendly, as well as easy to use and maintain. The system gives the customer consistent cleaning results, which means better hygiene and time-savings, as well as reduced water, chemical and disinfectant consumption. The ACS II system can also be connected to and control your Lagafors® stationary flush ramps, SSB (on page 44). External control of the valve stations is also possible.

The ACS II unit is comprised of the following:

- Stainless steel controller cabinet with Siemens PLC and touch display. As well as AS-i bus communication.
- Stainless steel valve cabinet with pneumatically controlled valves to regulate the water flow.
- Stainless steel valve cabinet (Combi) with pneumatically controlled valves to regulate water, chemical and disinfectant solutions.

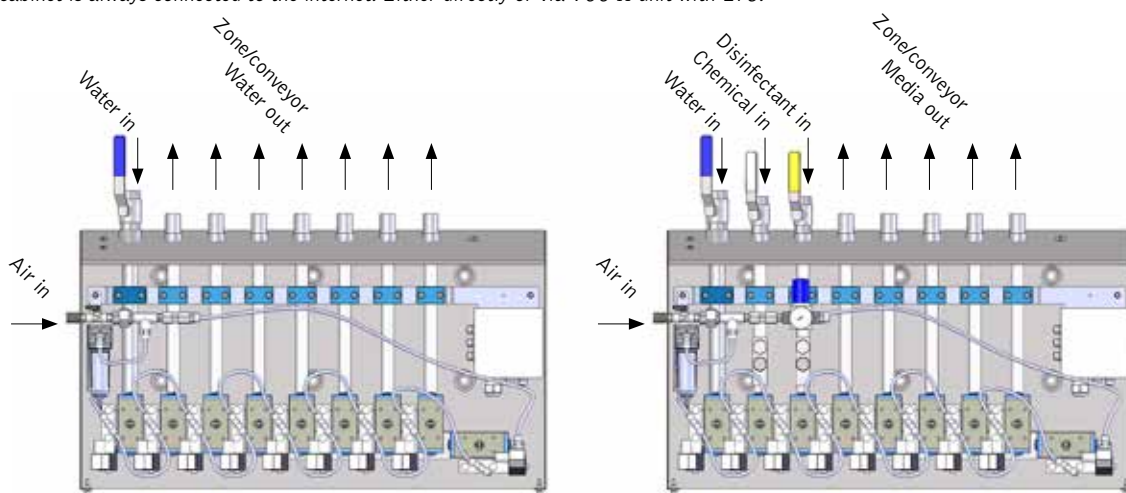
Features	Benefits	Facts
Easy to mount and connect	Time-efficient	Low installation cost
Intelligent, hygienic design	Easy to clean	Excellent hygienic aspects
"All-in-One" principle	Rinses, foam cleans, disinfects	Excellent and consistent cleaning results
Time optimization per belt	Saving of time	Lower material consumption
"Start and go" principle	Minimal need of handling	Large work savings

Technical information Lagafors® Automatic Cleaning System ACS II				
Model	ACS II Controller Cabinet	ACS II Water	ACS II Combi	
<b>Supply connections (internal thread)</b>				
Electric rating	230 V+N+PE 50/60 Hz			
Water, pressure		10-50 bar	10-50 bar	
Water, flow		10-150 lit/min	10-150 lit/min	
Water, dimensions		ISO-G 3/4"	ISO-G 3/4"	
Chemical solution, pressure			6-8 bar	
Chemical solution, flow			6-15 lit/min	
Chemical solution, dimensions			ISO 1/2"	
Disinfectant solution, pressure			6-8 bar	
Disinfectant solution, flow			6-15 lit/min	
Disinfectant solution, dimensions			ISO 1/2"	
Air, pressure			6-8 bar	
Air, flow			50-200 lit/min	
Air, dimensions			ISO 1/4"	
Outgoing media	7 x ISO 1/2" internal thread		5 x ISO 1/2" internal thread	
<b>Dimensions</b>				
Measurements WxDxH	820 x 185 x 455 mm			

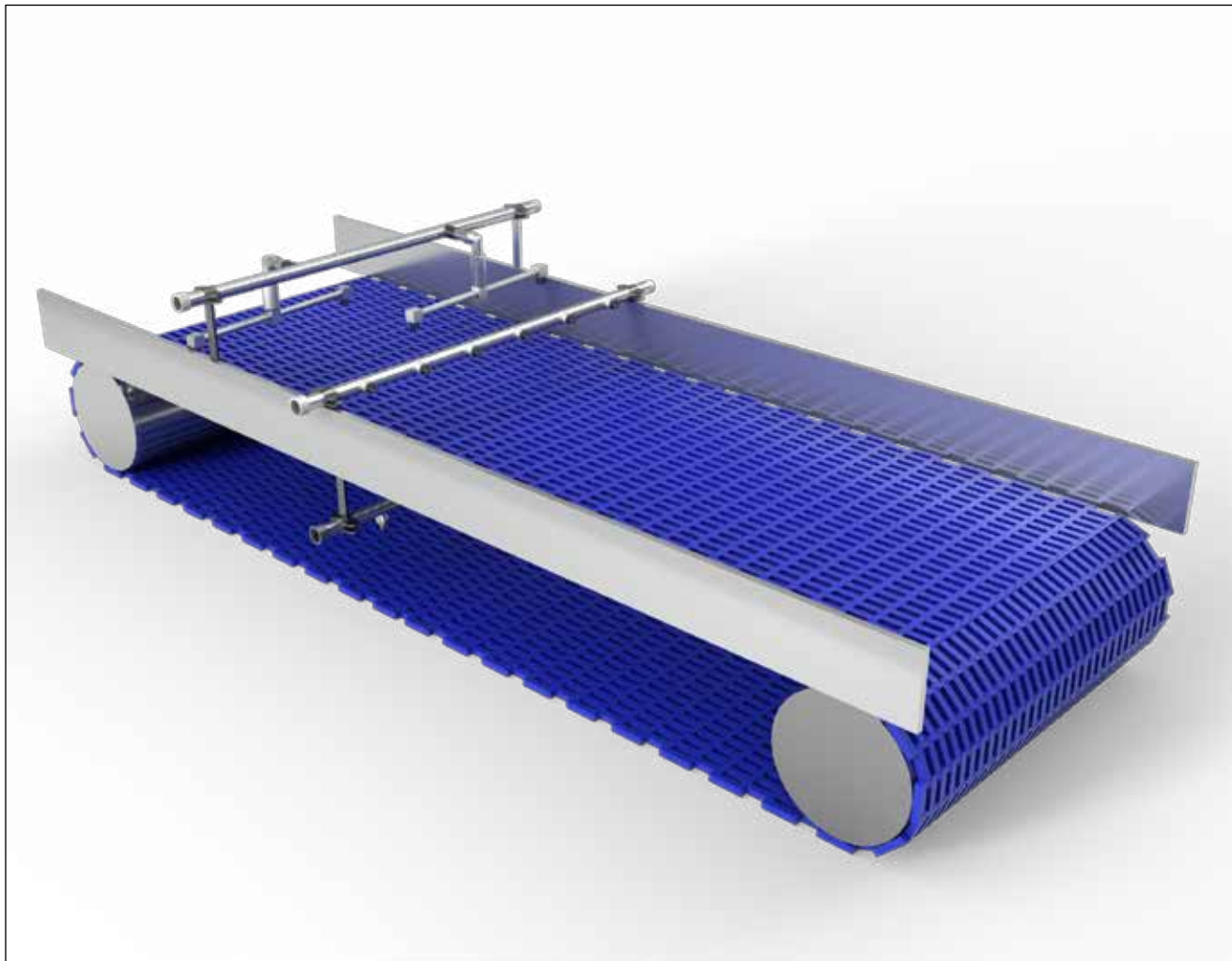
The data is subject to variation and the producer reserves the right to change design specifications without notice.

**Recommendations:**

- We recommend a maximum length of 30 metres between the valve station's chemical/disinfectant connections and the object to be cleaned.
- A rotating ramp will further increase the cleaning effect and water savings. Please see the separate product sheet.
- Control cabinets and valve stations use asi bus communication. Valve stations are also available with multi-conductor connection for external control. Specified when ordering. Wiring is offered on request.
- The control cabinet is always connected to the internet. Either directly or via VCC II unit with LTS.



# STATIONARY SPRAY BAR - SSB



Lagafors® stationary spray bar, SSB, were developed for effective cleaning of conveyor belts and other conveyor systems in the food processing industry. Can be supplied with media from a satellite station using a regular hose or, which we recommend, using a pipe from a Lagafors® Automatic Cleaning System, ACS II. Please see separate product sheet. The product series is divided into two main groups: Fixed and rotating bars.

Rotating bars for flushing increase the cleaning effectiveness and reduce water consumption. Fixed bars can be used anywhere, but are especially suitable for tight spots (e.g. the inside of a conveyor belt). Fixed bars can also be used to apply chemical and disinfectant foam solutions.

- Fixed positions for water as well as chemical and disinfectant solutions.
- Rotating bars for increased cleaning effectiveness and reduced water consumption.
- Available in all sizes between 200 mm and 800 mm (larger sizes can also be supplied).

Features	Benefits	Facts
Conveyor flushing (stationary, rotating)	100% coverage	Maximize hygienic results
Conveyor flushing (stationary, rotating)	Reduced work effort	Lower costs
Fixed spray bar	Space-efficient	Suitable for tight spots
Rotating spray bar	Increased cleaning effectiveness	Lower water consumption

Technical information Lagafors® Stationary Spray Bar SSB			
Model	Fixed spray bar, water	Rotating spray bar, water	Fixed foam bar
<b>Connections (internal thread)</b>			
Supply media	1/2"		
<b>Dimensions</b>			
Pipes	26,9 mm		
<b>Angle of dispersal</b>			
Nozzles/distance	65° / C = 80-95 mm (recommended)	15° / B = 50-100 mm	40° **
Nozzles/distance	80° / C = 65-80 mm		

The data is subject to variation and the producer reserves the right to change design specifications without notice.

Legend:

A = Belt width

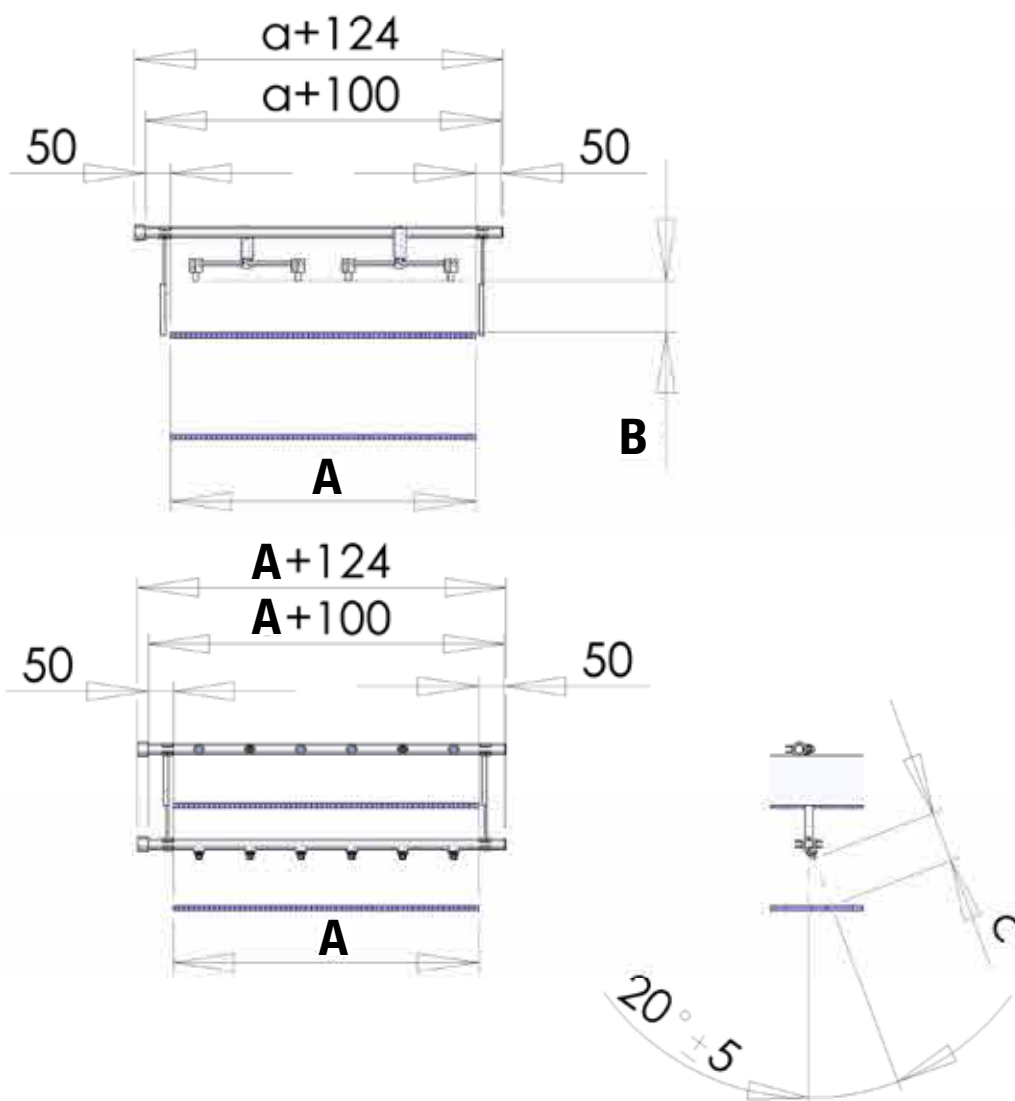
B = Recommended flush distance for rotating spray bar

C = Recommended flush distance for fixed spray bar

\* Pipe holders and nozzles not included. Must be ordered separately.

\*\* For the optimization of the foam ramp contact Lagafors or Lagafors dealers.

Double-ramp installation kit (top and bottom) ordered separately, art. no. 35329.



# LOW WATER PRESSURE PUMP - LWP CBA



The Lagafors® low-pressure centre LWP CBA (Low Water Pressure, Combi Booster Automatic), is designed for automatic cleaning of production equipment in the food-processing industry, such as conveyor belts, refrigerators, freezers, cooking cabinets, smoking cabinets, automatic roasters, etc. The unit features Lagafors' unique hygienic design that makes it suitable for placement in production areas and can be complemented with a built-in satellite station equipped with outlets for water and chemical and disinfectant solutions. This makes OPC (Open Plant Cleaning) within the unit's immediate vicinity (max 30 meters, 100 feet) possible. The unit is available in four different pressure/flow versions and is equipped with air-operated valves, which enable management from the customer's PLC and operator panel. Separate PLC management of the unit can be provided on request.

- Up to 40 bar working pressure.
- Up to 200 lit/min flow.
- Automatic and flexible system
- Ability to integrate with VMS II-DC
- Delivered with a hygienically designed cabinet.
- Unit is wall-mounted.
- The ACS II distribution satellite can be used for selecting different zones or washing objects.

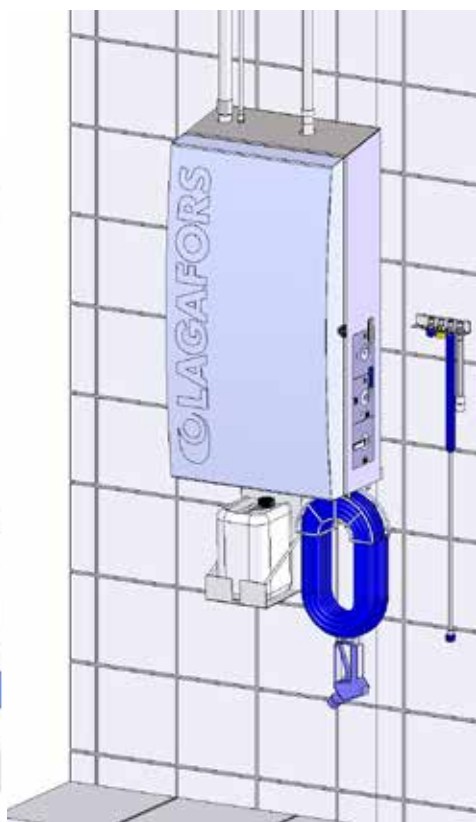
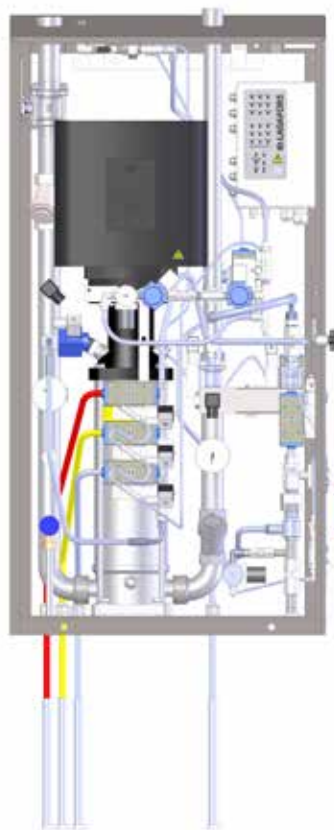
Features	Benefits	Facts
Increases the pressure on outgoing media	Better cleaning energy on surfaces	From 3 bar up to 40 bar
Flexibility in pressure and flow	Multiple options	40 bar and up to 200 lit/min
Supplies water as well as chemical and disinfectant solution	All-in-One concept	Flexible
Hygienic design	Enables placement in production area	Easy to clean
Electric cabinet with connection blocks	Management from customer's PLC	Low investment
Automatic and application flexibility	Quality and resource optimization	Saves time, water, chemicals and enables quality assurance

Technical information Lagafors® Low Water Pressure Pump LWP CBA				
Model	LWP CBA 10100	LWP CBA 10200	LWP CBA 20150	LWP CBA 4070
Outgoing water pressure	10-12 bar	10-12 bar	20-25 bar	35-40 bar
Water consumption	100 lit/min	200 lit/min	150 lit/min	70 lit/min
Flow capacity, max	130 lit/min	240 lit/min	165 lit/min	90 lit/min
Surrounding temperature	5-25 °C			
Relative air humidity, max	95%			
Connections (internal thread)				
Water incoming	ISO-G 1 1/4"	ISO-G 1 1/2"	ISO-G 1 1/4"	
Water supply, flow	150 lit/min	300 lit/min	180 lit/min	120 lit/min
Water supply, pressure	3-6 bar			
Water temperature, max	60 °C			
Water outgoing	ISO-G 1"	ISO-G 1 1/4"	ISO-G 1"	
Air, incoming	ISO-G 1/4"			
Air, pressure	6-8 bar			
Air, flow	400 lit/min			
Electricity				
Voltage (other specifications on request)	3 x 400 V+PE / 50 Hz	3 x 400 V+PE / 50/60 Hz		
Current	6 A	10 A	15 A	
Power	2,2 kW	4 kW	7,5 kW	
Control of the unit	According to the wiring diagram			
Dimensions				
Measurements WxDxH	640 x 380 x 1290 mm	830 x 410 x 1400 mm	640 x 380 x 1290 mm	
Weight, approx.	140 kg	200 kg	175 kg	

The data is subject to variation and the producer reserves the right to change design specifications without notice.

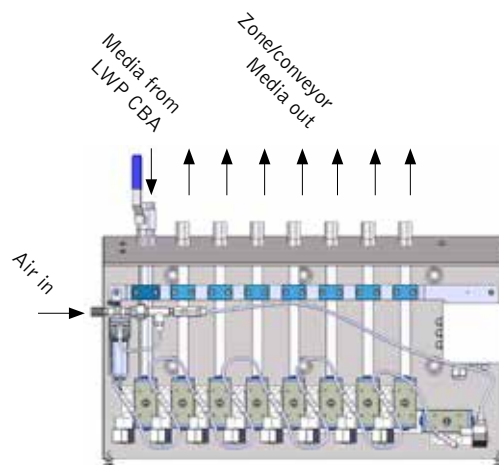
- Units can be provided with or without a built-in satellite station.
- The CBA unit is available with up to 3 chemicals.

Lagafors® LWP CBA 20150  
incl. satellite.



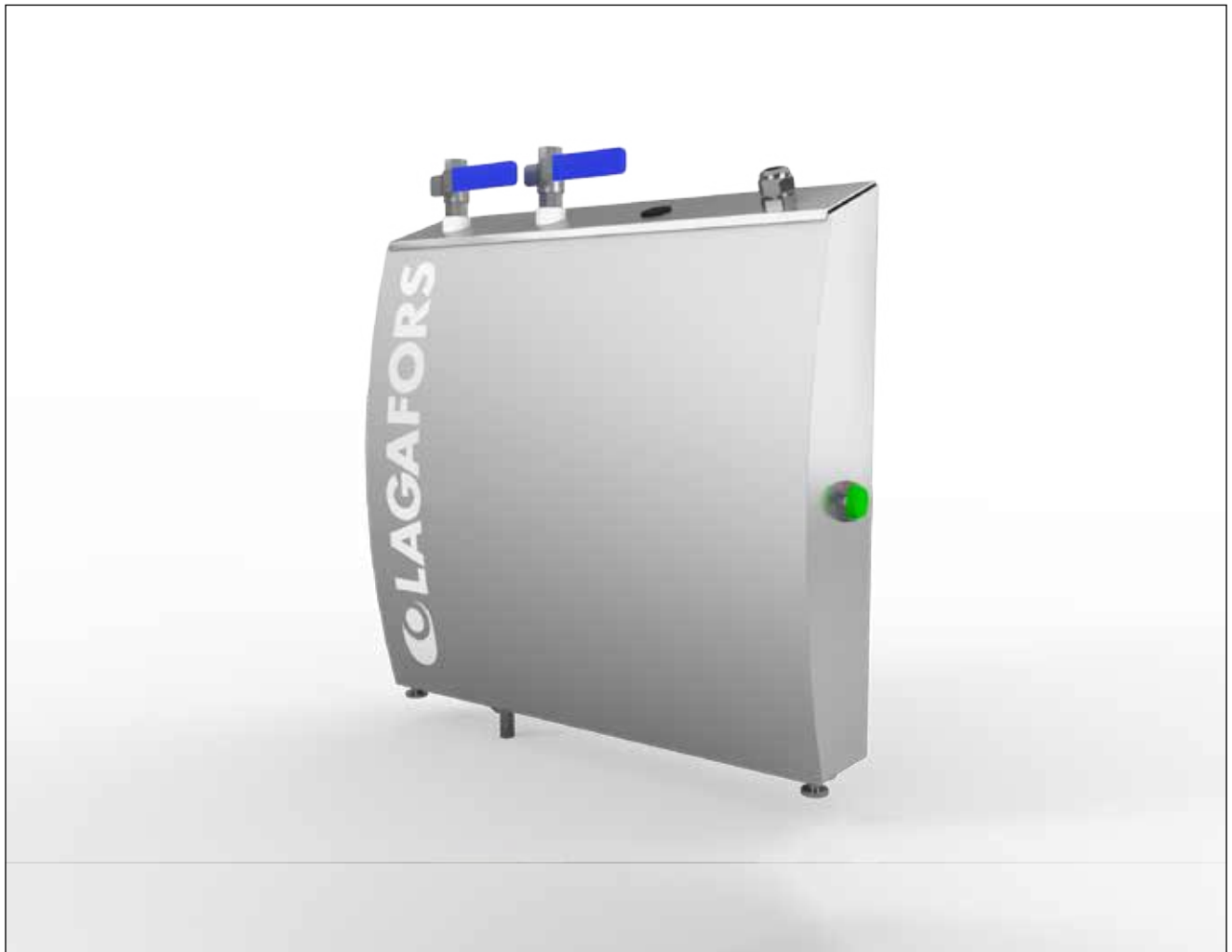
The unit has optional equipment.  
Option for measuring values such as:

- Chemical flow
- Water flow / temperature
- Water pressure



Lagafors® ACS II, automatic distribution satellite.

# FLOOR FOAMING UNIT - FFU II



The Lagafors® Floor Foaming Unit, FFU II, is a hygienically designed satellite station that you can connect to a Lagafors® central unit VCC II or a regular water main. When connecting the water supply (de-central unit), the injector is used for supplying chemical from a cannister in connection with the unit. The unit was developed for the application of chemical foam on a floor section (e.g. a passage or a sluice) between different hygiene zones, thereby reducing the spread of bacteria. The FFU II is made entirely of stainless steel. You simply set the timer, and then press a push-button to start the unit.

The FFU II is comprised of the following:

- Stainless steel hood with a slanted top for increased hygiene.
- Time relay for optimum setting.
- Foam ramp and 5 meters connection hose included.

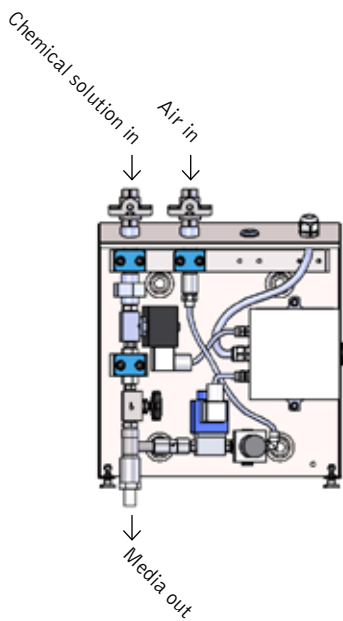
Features	Benefits	Facts
Easy to mount and connect	Time-efficient	Lower installation costs
Ingenious design	Easy to clean	Excellent hygienic aspects
"All-in-One" principle	Adjustable application time	Optimum hygiene at minimum costs



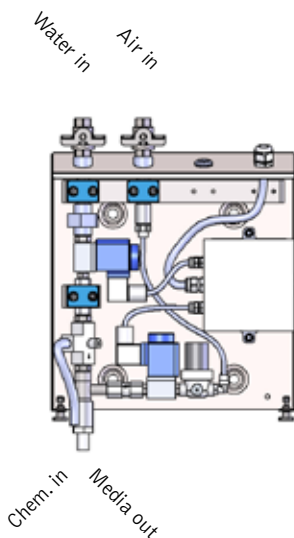
## Technical information Lagafors® Floor Foaming Unit FFU II

Connections (internal thread)	FFU II-C	FFU II-DC
Vatten 4-8 bar		ISO-G 3/8"
Luft 6-8 bar		ISO-G 3/8"
Alkaline chemicals 6-8 bar (from VCC II)	ISO-G 3/8"	
Luft 4 bar (from VCC II)	ISO-G 3/8"	
<b>Electricity</b>		
Voltage	1 x 230 V+N+PE	
<b>Dimensions</b>		
Measurements WxDxH	320 x 110 x 340 mm	

The data is subject to variation and the producer reserves the right to change design specifications without notice.



FFU II-C



FFU II-DC



FFU II-C